

hart6n

Year 12

Progression evening

---

## Aim of the evening:

Introduce key staff

Go through what support / opportunities have been offered so far this year

Outline what is happening in the months ahead

Outline future progression options (UNIFROG)

Look at student finance

Have any questions answered

# Our focus:

## Subject / Curriculum based:

Develop academic skills in specific subjects.

Support students in producing coursework.

Prepare students for examinations.

## Additional:

Opportunities to develop as well-rounded young people in positive way.

Provide young people with the necessary skills and qualities to progress in a positive way in the future.

Have a good balance in life and be able to manage and develop themselves in a challenging and complex world.



**That your time at Harton 6th Form will be positive, purposeful and engaging and provide a stepping-stone for a successful future and contentment in life.**

Year 12

## Enrichment programme

First Aid

Golf driving range

Sign Language

Fitness

Digital Inclusion

School placements

Board games

Debating

Academic Challenge

Becoming X - skills programme

# Opportunities

University Support schemes (HE+, Supported Progression, 1st Choice, NU Entry, Partners etc)

Duke of Edinburgh's Award (Silver / Gold)

Overseas expedition – Kenya

Ski trip

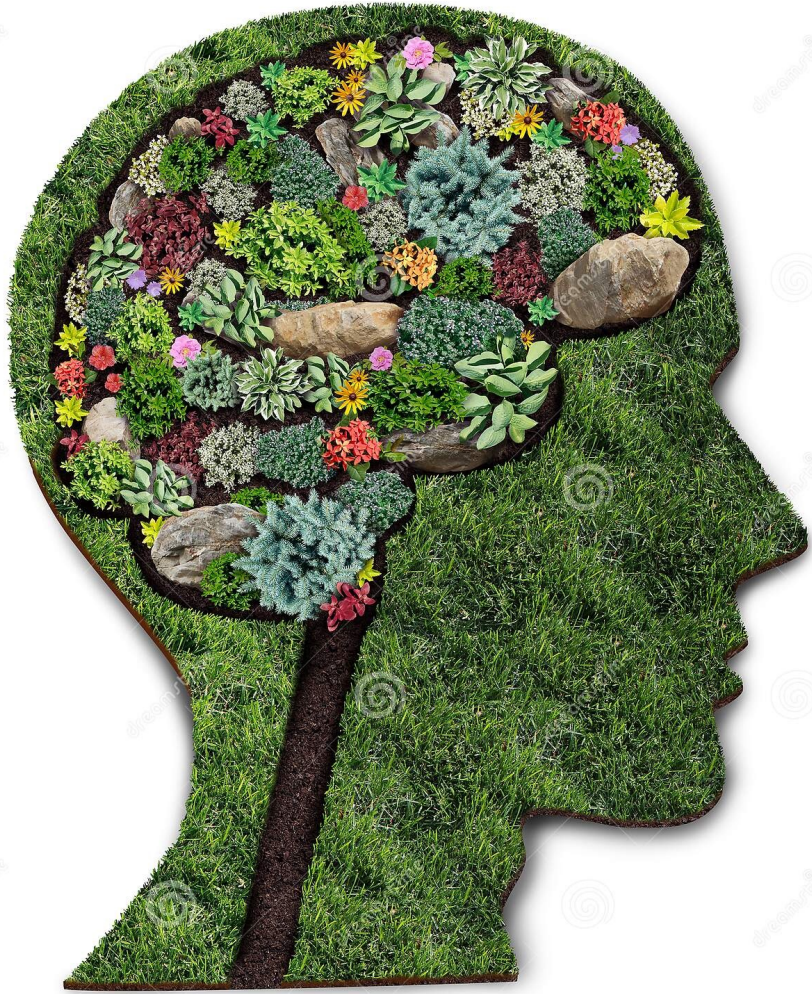
Department trips (Ashbourne, London etc)

Ice skating

6th Form Leadership team

Mentoring

Work Experience



# KS5 PD

## Curriculum Outline

YEAR 12

### Respectful Relationships



Equality and gender  
Toxic and positive masculinity  
Bold Voices- external agency  
Recognising abuse and revenge porn.

Strategies for managing dangerous situations or relationships

### Mental Health & Wellbeing

Mental health and emotional wellbeing  
Managing stress



### Relationships

Personal values in relation to  
contraception and sexual health  
Fertility  
Pregnancy

### Health Choices & Safety

Independence and keeping safe  
The impact of substance use  
including vaping



### Diversity / Multiculturalism

British values  
Challenging prejudice and discrimination  
Religious pluralism and tolerance



### Building & Maintaining Relationships

Personal safety - Coercive control  
Conflict resolution



YEAR 13

### Risk Management

Healthy eating and obesity  
Body image  
Plastic surgery



### Revision Skills



### Social Justice

Feminism  
Black lives matter



### Environmental Ethics

Religion and environmental ethics  
Climate change  
Animal rights

### Skills Learnt:

- Research
- Analysis
- Interpretation
- Reflection
- Empathy
- Evaluation
- Expression
- Disciplinary Literacy
- Independence Skills

## **Wednesday afternoons**

**7th September- Year 12 Motivational movie - 1.15pm - 3.00pm**

**14th September - Year 12 talk - 1.15pm, Beyond the Headlines: The Attitudes & Cultures that Lead to Sexual Violence.**

**22nd September - Year 12 Parents' Welcome Event, lecture theatre, 6.30pm (RB / KB)**

**28th September - Year 12 talk - 2.15pm - RAF Careers (JM)**

**5th October – 1.15pm - ASK Apprenticeships**

**12th October – 1.15pm Year 12 talk - NetKNO**

**19th October - 'Resilient Me' workshop- Main Hall 1.15-3.15 Y12 and Y13**

# Term 1

Week	Topic
1 – 1 (PD)	Introduction / Aims and outline / Mindset / Transferable Skills
2 – 2 (RS)	
3 -1 (PD)	Positive mental Health / Procrastination / Work life balance
4 – 2 (RS)	
5 – 1 (PD)	Skills / Qualities / UNIFROG (personality questionnaire)
6 – 2 (RS)	
7 – 1 (PD)	Effective study skills intro / Memory / Efficiency
Oct Half term	////////////////////
8 – 2 (RS)	
9 – 1 (PD)	Effective study skills – Retention pyramid / retrieval practices / Active learning
10 – 2 (RS)	
11 – 1 (PD)	Effective study skills – Understanding / Application / Past papers
12 – 2 (RS)	
13 – 1 (PD)	Super-curricular activities
14 – 2 (RS)	
15 – 1 (PD)	Termly review / Road / Travel safety

# REVISION- HOW TO MAKE IT STICK



Analyse **one** way Superdry's business objectives may change as the business grows.

Explain **one** likely economic effect of the change in the UK unemployment rate



SHORT ANSWER Qs  
& EXTENDED  
EXPLANATIONS

PEER DISCUSSION

FLASH CARDS

Create your own

- Question should be on one side and the answer on the other
- Use visuals to prompt
- Give yourself time before turning over
- Keep revisiting

SUMMARISING



SELF QUIZZING  
& TESTING



BRAIN DUMPS

This might look like a mindmap.

- Write down some words you associate with a topic.
- What links can you make?
- Use your notes to self check.
- Repeat regularly



# Know the specification...

- [www.aqa.org.uk](http://www.aqa.org.uk)
- [www.edexcel.com](http://www.edexcel.com)
- [www.ocr.org.uk](http://www.ocr.org.uk)
- [www.eduqas.co.uk](http://www.eduqas.co.uk)

Subject content	What students need to learn:
1.2.1 Demand	a) Factors leading to a change in demand: <ul style="list-style-type: none"><li>o changes in the prices of substitutes and complementary goods</li><li>o changes in consumer incomes</li><li>o fashions, tastes and preferences</li><li>o advertising and branding</li><li>o demographics</li><li>o external shocks</li><li>o seasonality</li></ul>
1.2.2 Supply	a) Factors leading to a change in supply: <ul style="list-style-type: none"><li>o changes in the costs of production</li><li>o introduction of new technology</li><li>o indirect taxes</li><li>o government subsidies</li><li>o external shocks</li></ul>

# Term 2

15 – 2 (RS)	
16 – 1 (PD)	Post 18 options and UNIFROG research – FE / HE / Apprenticeships / Gap years
17 – 2 (RS)	
18 – 1 (PD)	First Aid / Work Experience / Future Planning
19 -2 (RS)	
20 – 1 (PD)	Competencies / Writing a personal statement
Feb Half Term	//////////////////////////////////// //////////////////////////////////////
22 – 2 (RS)	
23 – 1 (PD)	Money Management
24 – 2 (RS)	
25 – 1 (PD)	Termly review / Exam preparation / Stress Management
26 – 2 (RS)	

# Term 3

Easter	////////////////////
28 – 1 (PD)	Revision
29 – 2 (RS)	
30 – 1 (PD)	Revision
31 – 2 (RS)	
32 – 1 (PD)	Revision
May Half Term	////////////////////
33 – 2 (RS)	
34 – 1 (PD)	MOCKS
35 – 2 (RS)	
36 – 1 (PD)	Personal statements
37 – 2 (RS)	
38 – 1 (PD)	Yearly review / target setting
39 – 2 (RS)	

# End of year examinations – 14th – 23rd June

Study leave for these dates so students just in in for these examinations.

Revision sessions may be offered by subjects and staff will be usual rooms during this time.

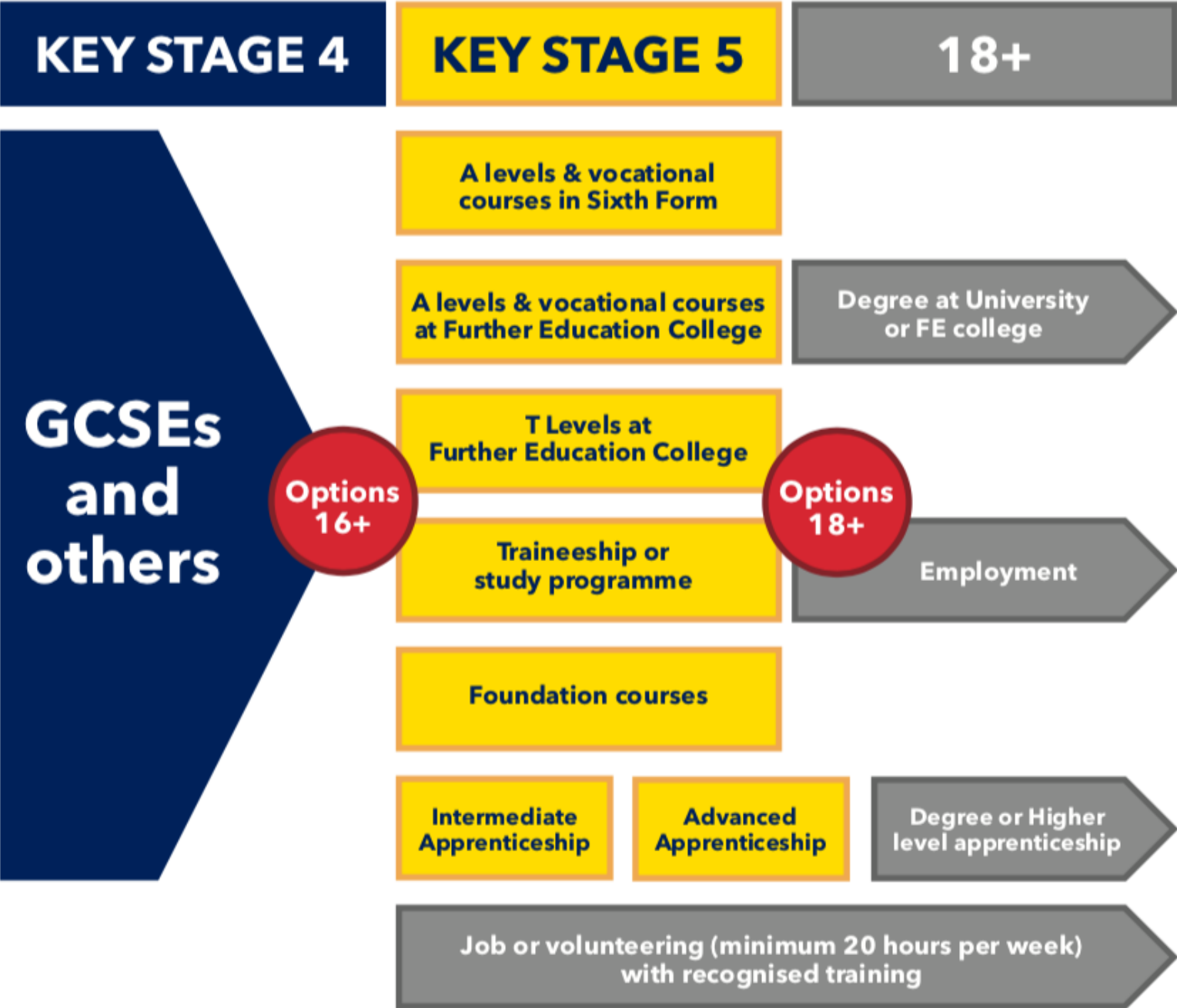
Lessons resume on 26th June for a week prior to Activities week.

Lessons resume on 10th July until 21st July (Last day of term)

## Activities Week – 3rd – 7th July

	Year 12
Monday 3rd July	Work Experience
Tuesday 4th July	Work Experience
Wednesday 5th July	Northumbria University trip
Thursday 6th July	Personal Statements / CV
Friday 7th July	Personal Statements/Trip to Uni - Leeds

# Post 17/18 Progression



## PROGRESSION OPTIONS:

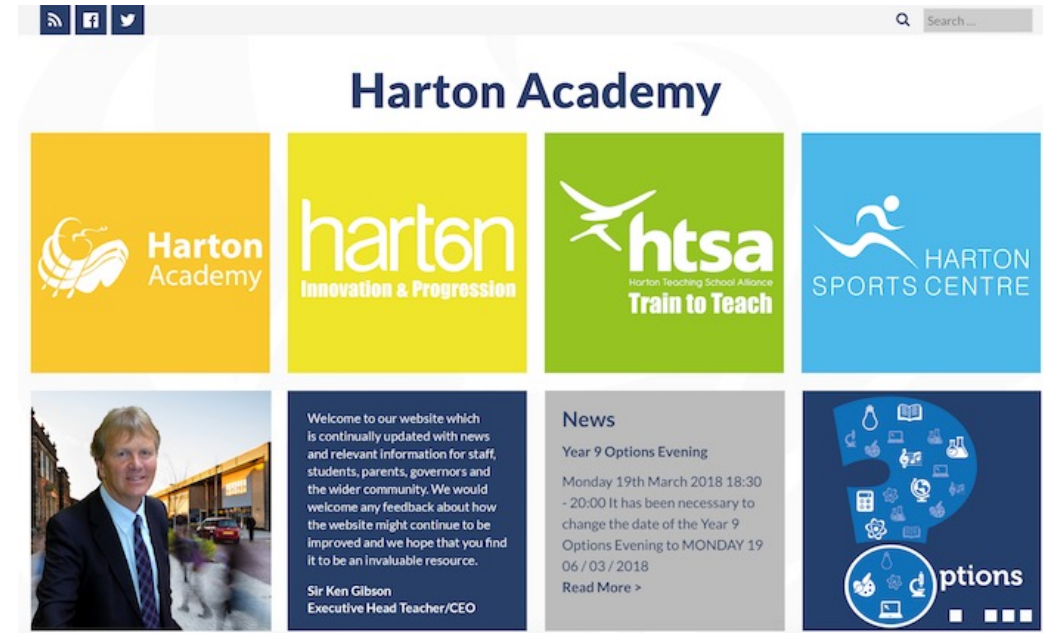
Further Education (FE)

Higher Education (HE)

Apprenticeships

Employment

GAP year



UCAS



## Plan A / B / C

You may apply for University and then seek apprenticeships or research / plan GAP year.

Deferred Entry option



Levels (Intermediate / Advanced / Higher)

School Leaver programmes

Competitive

Mutli stage interviews

Varied application deadlines

# How to select a University / Course

<https://www.ucas.com/undergraduate/what-and-where-study/how-choose-right-undergraduate-course-you>

Location

Interests

Assessment

Course content

Professional course component

Progression statistics

Satisfaction ratings

Placements / trips

Additional opportunities

Support

Financial support

Support schemes

# Exploring in detail

<https://www.theuniguide.co.uk/>

<https://www.whatuni.com/>

<https://www.which.co.uk/money/university-and-student-finance>



# Higher Education timeline

Register for UCAS from mid-May

Open days / visits (Summer / Autumn)

Start personal statements pre summer holidays

Early entry – 15th October (End of September)

Application deadline 25th January (Pre-Christmas)

# UCAS

Cost of applying - £27.50

Up to 5 applications in first cycle

After offers received you then select Firm and Insurance choice

UCAS Extra

Clearing

Foundation year (40 – 80 UCAS points)

# UCAS points

A LEVEL	UCAS POINTS
A*	56
A	48
B	40
C	32
D	24
E	16

AS LEVEL	UCAS POINTS
A	20
B	16
C	12
D	10
E	6

## **Pearson BTEC Subsidiary Diploma (QCF)**

Grade Tariff points

D\* 56

D 48

M 32

P 16

## **Pearson BTEC Certificate (QCF)**

Grade Tariff points

D\* 28

D 24

M 16

P 8



# **STUDENT FINANCE EXPLAINED**

**2021 TO 2022**

MARTIN LEWIS:

## Student Loans Decoded

---

[MoneySavingExpert.com](http://MoneySavingExpert.com)



## **CHANGES!!**

**University graduates will pay student loans back over 40 years instead of 30: How much more will they pay and what do the new rules mean?**

- **University graduates are set to pay back loans over 40 years instead of 30**
- **Students from 2023 will start paying for loans once earning £25k instead of £27k**
- **Yearly tuition fees are to be frozen at £9,250 until September 2025**
- **Experts say this will cripple low-income graduates with 'lifelong tax'**

They will be subject to lower repayment boundaries and longer repayment schedules, as the government attempts to reduce the fast-growing national student debt, which currently stands at £161 billion.

# Changes

	Total repayments		
Starting salary	Current	New	Difference
£20,000	£0	£7,207	-£7,207
£25,000	£9,504	£36,120	-£26,616
£30,000	£30,900	£71,518	-£40,618
£35,000	£53,401	£86,936	-£33,535
£40,000	£75,902	£73,353	£2,549
£45,000	£98,404	£66,114	£32,290
£50,000	£117,092	£61,744	£59,161

**You'll only start making repayments if your income is over the repayment threshold, which is currently £25,000 a year, £2,083 a month or £480 a week in the UK.**

If your income falls below the repayment threshold, your repayments will stop and only restart when your income is over the threshold again.

You can also make additional voluntary repayments to SLC at any time.

Written off after 40 years

Income each year before tax	Monthly income before tax	Approximate monthly repayment
£25,000	£2,083	£0
£27,000	£2,250	£15 (Approx 9% Of £167)
£33,000	£2,750	£60 (Approx 9% of £667)

**Interest on Plan 5** - The interest rate will be based on the Retail Price Index.

Less interest but paying back more

## Year 12 – 13 Progression

Teacher assessed grades / end of year exams

Minimum grade D's

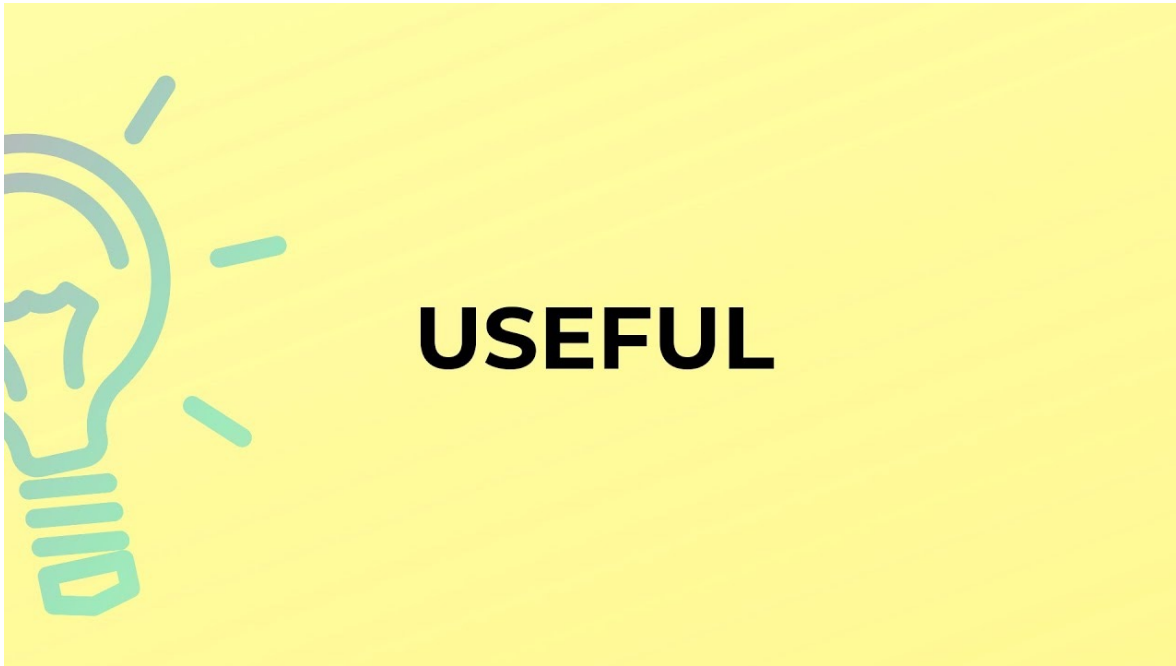
Bespoke programmes / flexible approach

Positive progression

Alternative options

Hopefully, you found this evening:

---





Any  
questions?